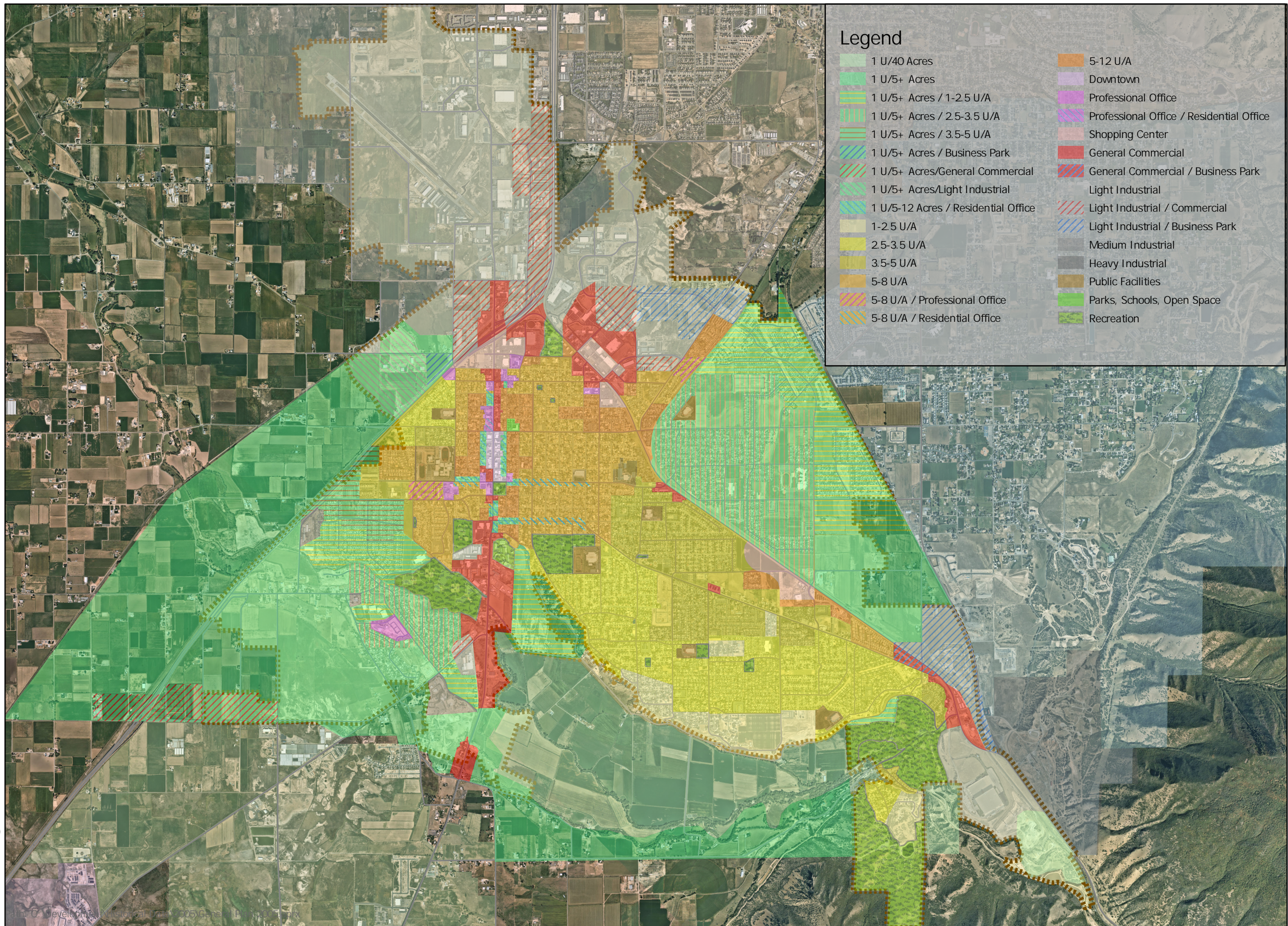


# General Plan 2005

—  
1" = 3,315 Ft



## Legend

- |                                     |  |
|-------------------------------------|--|
| 1 U/40 Acres                        | 5-12 U/A                                 |
| 1 U/5+ Acres                        | Downtown                                 |
| 1 U/5+ Acres / 1-2.5 U/A            | Professional Office                      |
| 1 U/5+ Acres / 2.5-3.5 U/A          | Professional Office / Residential Office |
| 1 U/5+ Acres / 3.5-5 U/A            | Shopping Center                          |
| 1 U/5+ Acres / Business Park        | General Commercial                       |
| 1 U/5+ Acres/General Commercial     | General Commercial / Business Park       |
| 1 U/5+ Acres/Light Industrial       | Light Industrial                         |
| 1 U/5-12 Acres / Residential Office | Light Industrial / Commercial            |
| 1-2.5 U/A                           | Light Industrial / Business Park         |
| 2.5-3.5 U/A                         | Medium Industrial                        |
| 3.5-5 U/A                           | Heavy Industrial                         |
| 5-8 U/A                             | Public Facilities                        |
| 5-8 U/A / Professional Office       | Parks, Schools, Open Space               |
| 5-8 U/A / Residential Office        | Recreation                               |



Print Date: 11/9/2021

Spanish Fork City GIS  
40 South Main St  
Spanish Fork, UT 84660  
GIS Phone Numbers:  
(801) 804-4571 (Administrator)  
(801) 804-4570 (Intern)  
(801) 804-4572 (Intern)

Disclaimer: Spanish Fork City makes no warranty with respect to the accuracy, completeness, or usefulness of these maps. Spanish Fork City assumes no liability for direct, indirect, special, or consequential damages resulting from the use or misuse of these maps or any of the information contained herein. Portions may be copied for incidental uses, but may not be resold.