

# Spanish Fork Trails



1" = 3,500 Ft

Print Date: 3/23/2023



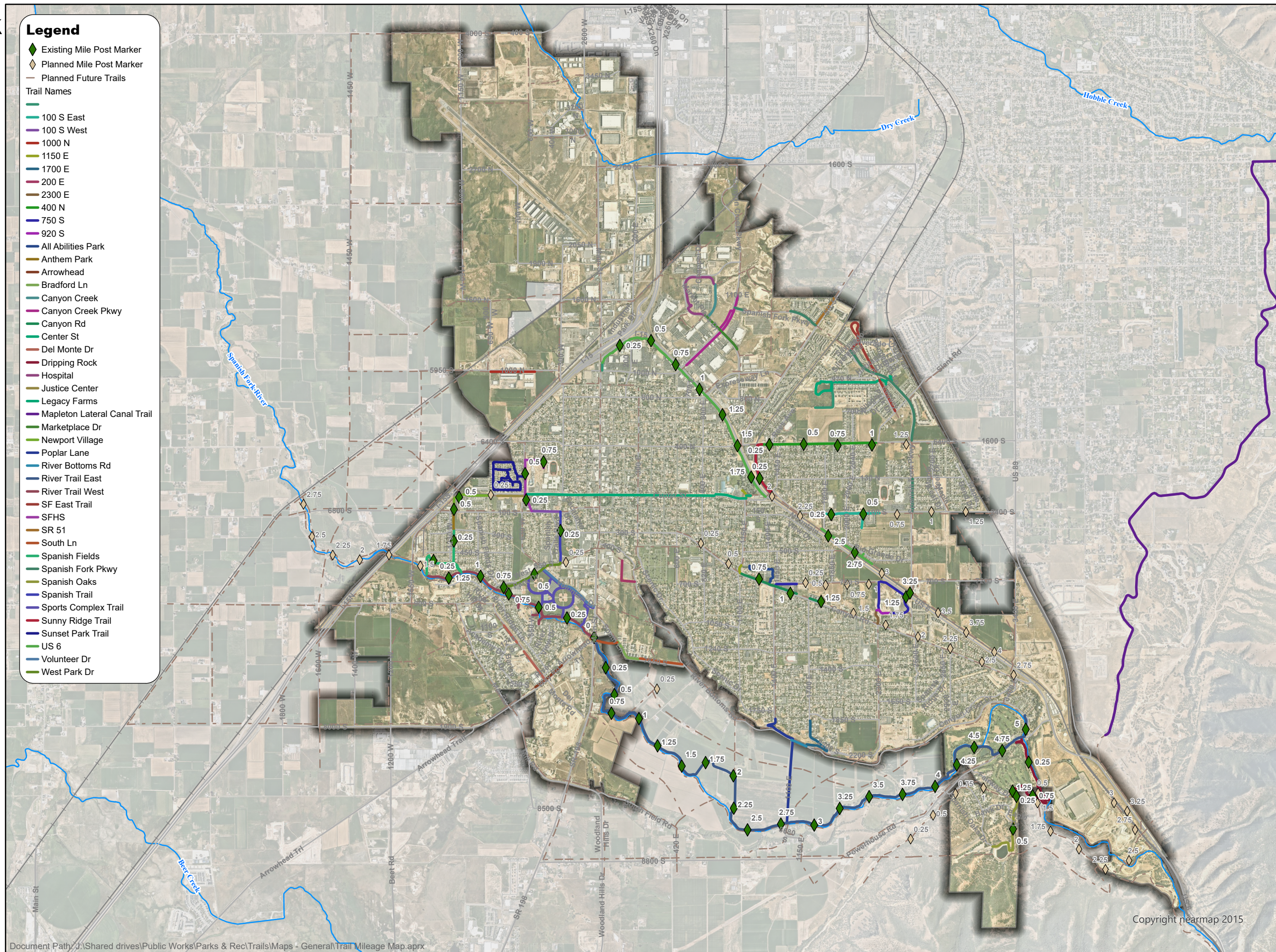
**SPANISH FORK**  
ENGINEERING

Spanish Fork City GIS  
40 South Main St  
Spanish Fork, UT 84660  
GIS Phone Numbers;  
(801) 804-4571 (Administrator)  
(801) 804-4570 (Intern)  
(801) 804-4572 (Intern)

Disclaimer: Spanish Fork City makes no warranty with respect to the accuracy, completeness, or usefulness of these maps. Spanish Fork City assumes no liability for direct, indirect, special, or consequential damages resulting from the use or misuse of these maps or any of the information contained herein. Portions may be copied for incidental uses, but may not be resold.

## Legend

- ◆ Existing Mile Post Marker
- ◇ Planned Mile Post Marker
- Planned Future Trails
- Trail Names
- 100 S East
- 100 S West
- 1000 N
- 1150 E
- 1700 E
- 200 E
- 2300 E
- 400 N
- 750 S
- 920 S
- All Abilities Park
- Anthem Park
- Arrowhead
- Bradford Ln
- Canyon Creek
- Canyon Creek Pkwy
- Canyon Rd
- Center St
- Del Monte Dr
- Dripping Rock
- Hospital
- Justice Center
- Legacy Farms
- Mapleton Lateral Canal Trail
- Marketplace Dr
- Newport Village
- Poplar Lane
- River Bottoms Rd
- River Trail East
- River Trail West
- SF East Trail
- SFHS
- SR 51
- South Ln
- Spanish Fields
- Spanish Fork Pkwy
- Spanish Oaks
- Spanish Trail
- Sports Complex Trail
- Sunny Ridge Trail
- Sunset Park Trail
- US 6
- Volunteer Dr
- West Park Dr



Copyright nearmap 2015

Document Path: J:\Shared drives\Public Works\Parks & Rec\Trails\Maps - General\Trail Mileage Map.aprx